

*Your
Logo
Here*

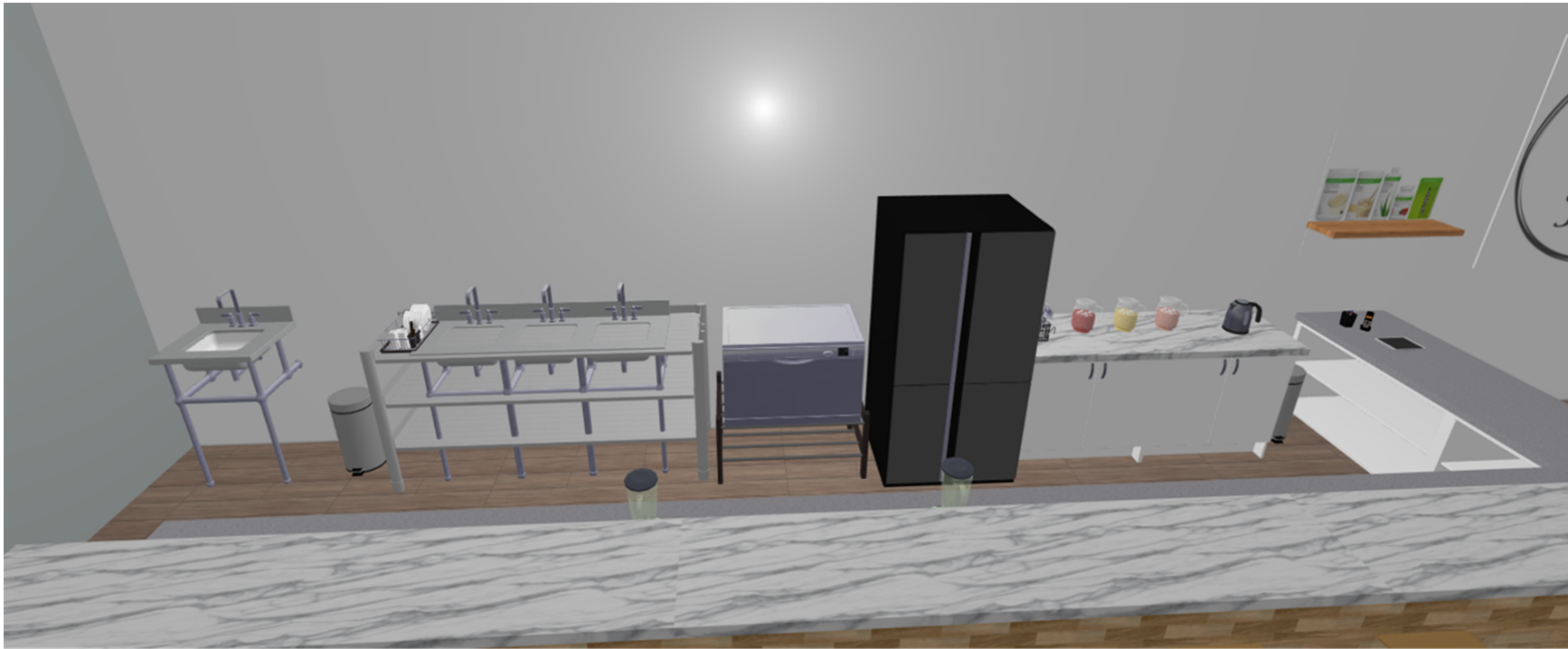


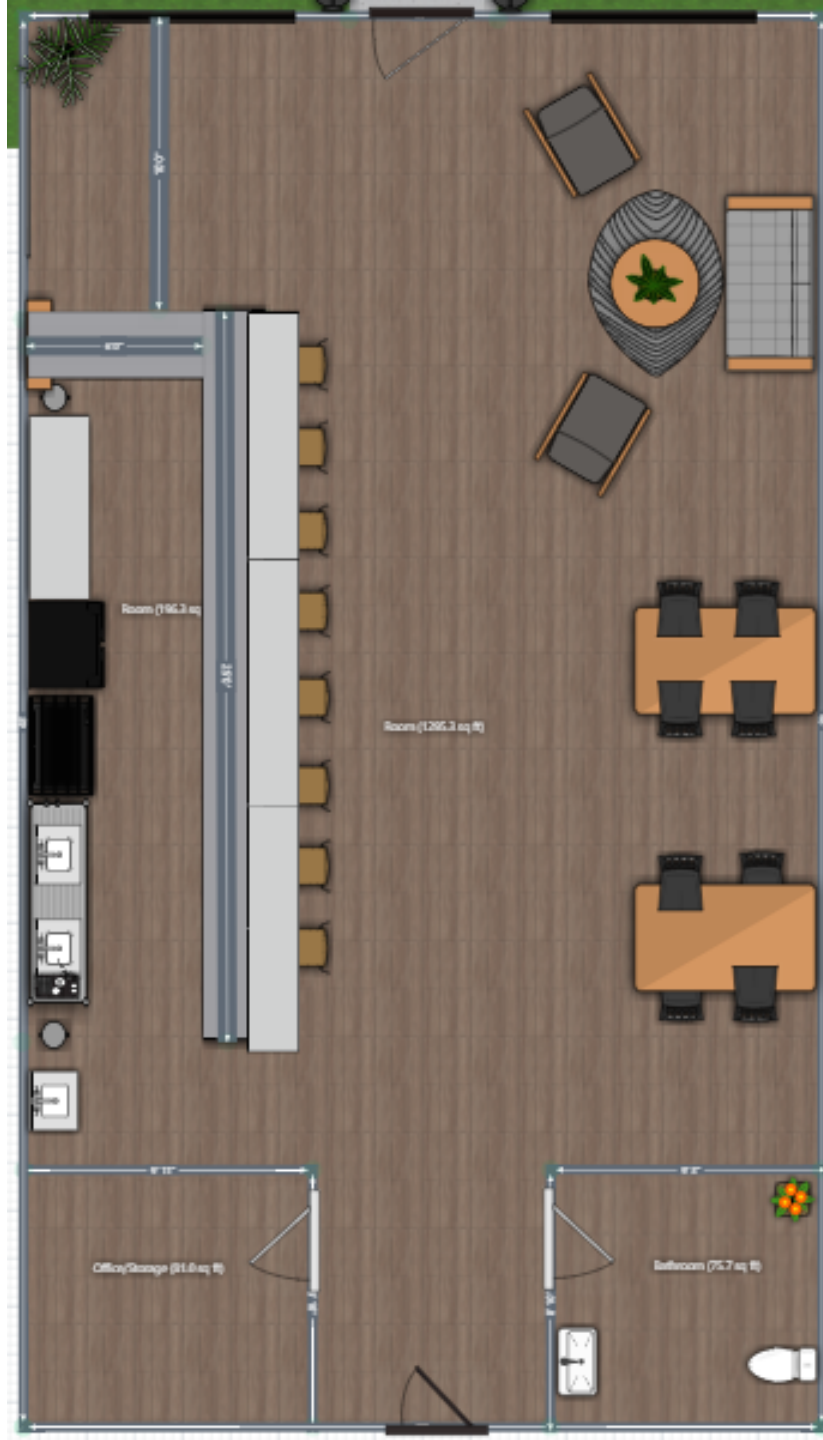
Your
Logo
Here

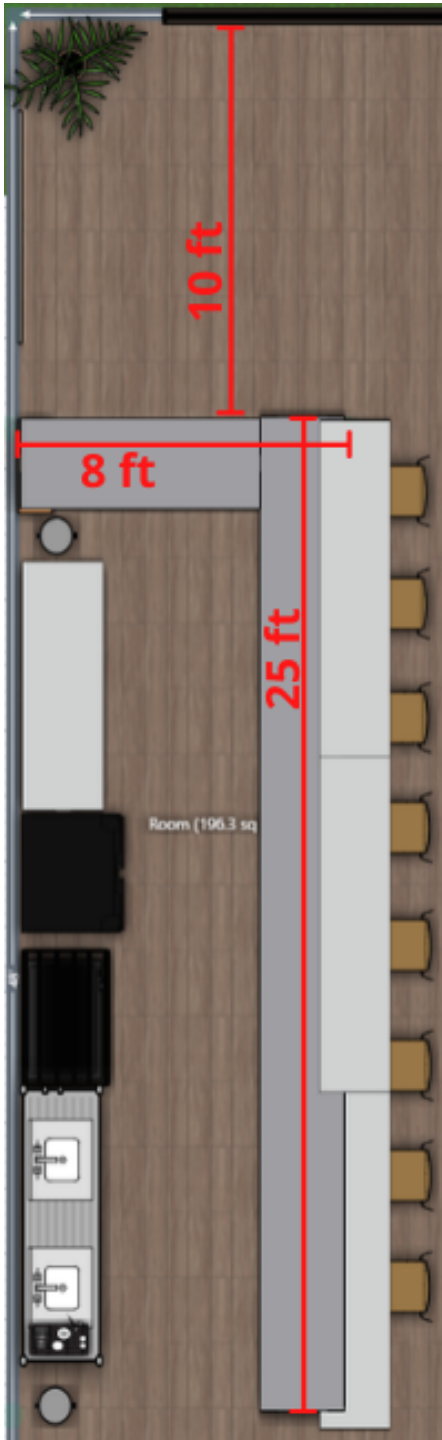




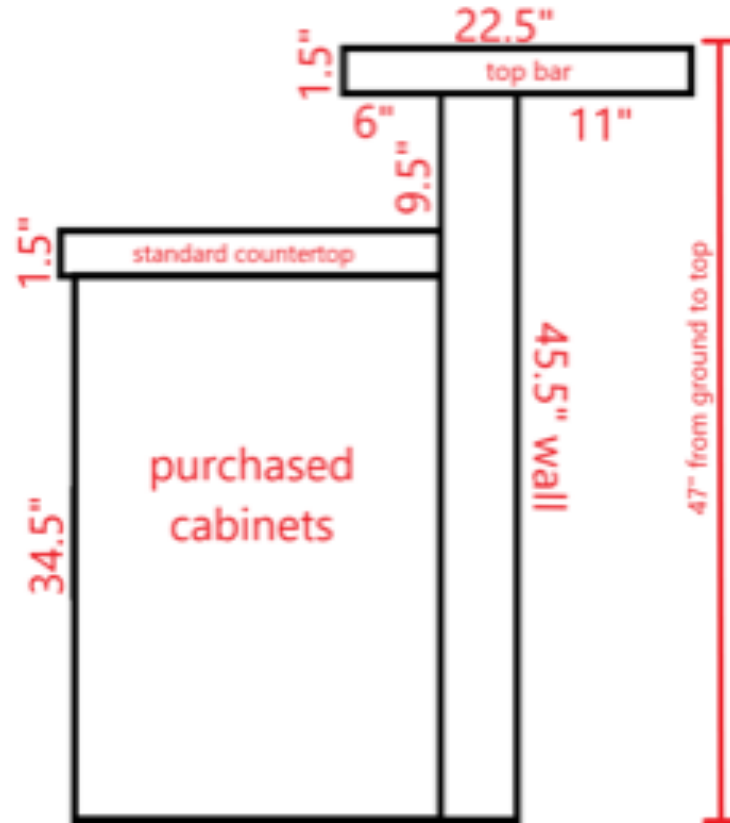




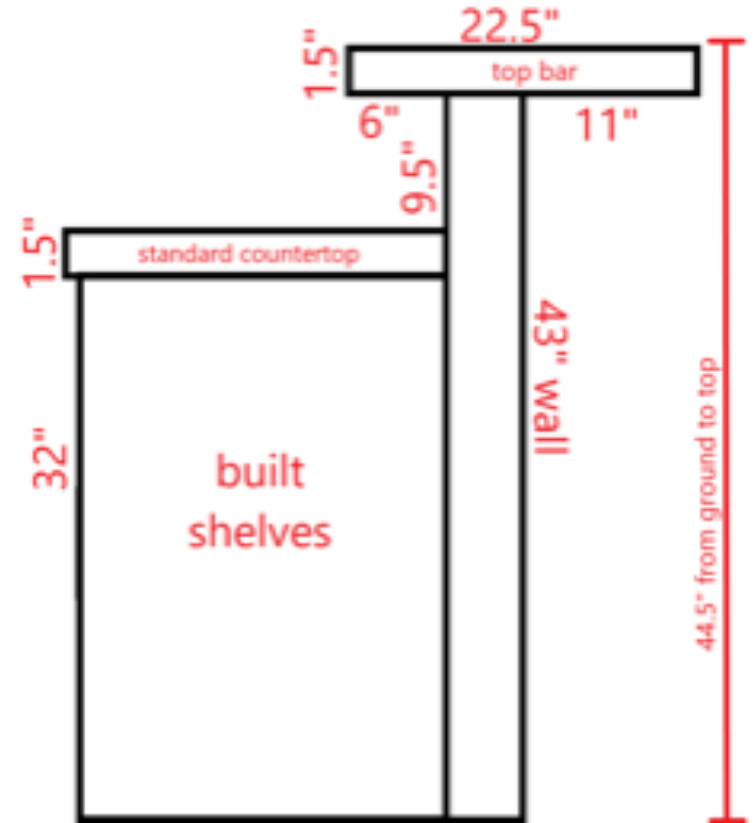




Bar measurements when purchasing cabinets



Bar measurements when building shelves



If you choose not to rip the top bar width down to 22.5", it can be left at the full original width

25' counter length may vary based on ACTUAL countertop section lengths- we recommend measuring the true length of countertops before starting building

Check it out in 2D or 3D. Copy link below:

- <https://planner5d.com/view/?key=7a8e2d8f96d80198da0b8a4ce785552a>